

HUNAN BALING STEEL CO.,LTD

Add:NO.18 YIJIA GROUP,MULI MANAGEMNET OFFICE ECONOMIC DEVELOPMENT ZONE,
YUEYANG,HUNAN PROVINCE,P.R.CHINA.

Tel: +86 18216341633

E-mail Address: Lincoln@balingsteel.com Website:www.baling-steel.com



Datasheet for API 5CT L80 Casing Pipe

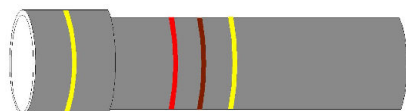
L80-1



L80 9Cr



L80 13Cr



Premium API 5CT L80 Casing Pipe for Oil & Gas Applications

L80 is a quench-and-tempered grade family defined under API 5CT, with a controlled yield strength of 80,000–95,000 psi and a minimum tensile strength of 95,000 psi across all variants. **L80-1**, the base carbon steel sub-grade, provides consistent mechanical properties and basic H₂S resistance suitable for mildly sour wells. **L80 9Cr** adds a 9% chromium, 1% molybdenum alloy composition that significantly improves CO₂ corrosion resistance for wells producing corrosive gas streams, offering an economical step up without committing to full stainless grades. **L80 13Cr** takes corrosion performance further with 13% chromium martensitic stainless steel, forming a stable passive oxide layer that delivers outstanding resistance in sweet-gas and high-CO₂ reservoirs — making it the preferred choice where carbon and low-alloy steel grades would experience rapid degradation.

- Material Grade:L80-1,L80 9Cr,L80 13Cr
- Applicable Product: Casing & Tubing 4½"–20".
- Thread Types: BC, STC / LTC, **Premium Connections.**
- Available Lengths: R1 / R2 / R3.

HUNAN BALING STEEL CO.,LTDAdd:NO.18 YIJIA GROUP,MULI MANAGEMNET OFFICE ECONOMIC DEVELOPMENT ZONE,
YUEYANG,HUNAN PROVINCE,P.R.CHINA.

Tel: +86 18216341633

E-mail Address: Lincoln@balingsteel.com Website:www.baling-steel.com

**Chemical Composition**

Stand ard	Gra de	Chemical Composition %								
		C	Si	Mn	P	S	Cr	Mo	Ni	Cu
	L80-1	≤0.43	—	≤1.90	≤0.030	≤0.030	—	—	—	—
API SPEC 5CT	L80 9Cr	≤0.15	≤1.00	0.30–0.60	≤0.020	≤0.010	8.00–10.00	0.90–1.10	≤0.50	≤0.25
	L80 13Cr	0.15–0.22	≤1.00	0.25–1.00	≤0.020	≤0.010	12.00–14.00	—	≤0.50	≤0.25

Mechanical Properties

Standard	Grade	Yield Strength MPa		Tensile Strength	Elongation %	Hardness max	
		min	max	MPa		HRC	HBW
	L80-1	552	655	655		23	241
API SPEC 5CT	L80 9Cr	552	655	655	≥19%	23	241
	L80 13Cr	552	655	655		23	241

Charpy Impact Energy

According to the API 5CT standard, there is no mandatory Charpy impact energy requirement for L80 class (including L80-1, 9Cr, and 13Cr).

Charpy Impact Energy J

Standard	Grade	Coupling		Pipe Body	
		L	T	L	T
API SPEC 5CT	L80-1	L-10-40-0	T-10-20-0	L-10-27-0	T-10-14-0

HUNAN BALING STEEL CO.,LTD

Add:NO.18 YIJIA GROUP,MULI MANAGEMNET OFFICE ECONOMIC DEVELOPMENT ZONE,

YUEYANG,HUNAN PROVINCE,P.R.CHINA.

Tel: +86 18216341633

E-mail Address: Lincoln@balingsteel.com Website:www.baling-steel.com



Charpy Impact Energy J

Standard	Grade	Coupling		Pipe Body	
		L	T	L	T
	L80 9Cr	L-10-40-0	T-10-20-0	L-10-27-0	T-10-14-0
	L80 13Cr	L-10-40-0	T-10-20-0	L-10-27-0	T-10-14-0
